

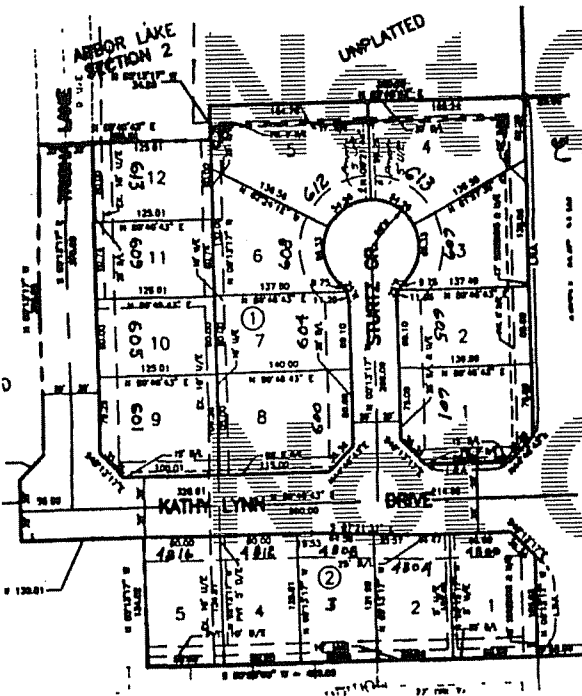
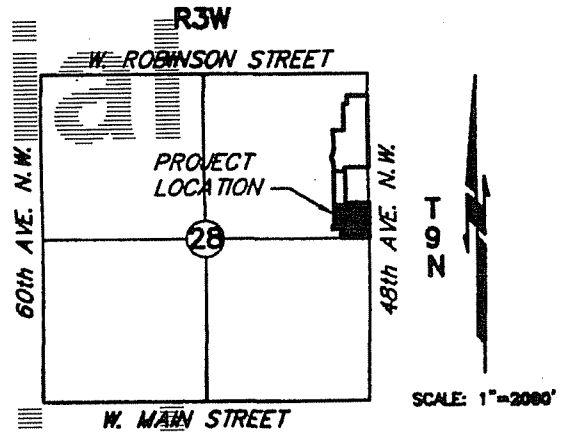
Doc#: P 2001 2  
Bk&Pg: PL 19 10  
Filed: 01-18-2001 LT  
03:13:22 PM PL  
Cleveland County, OK

# Not Official

## ARBOR LAKE ADDITION, SECTION 3

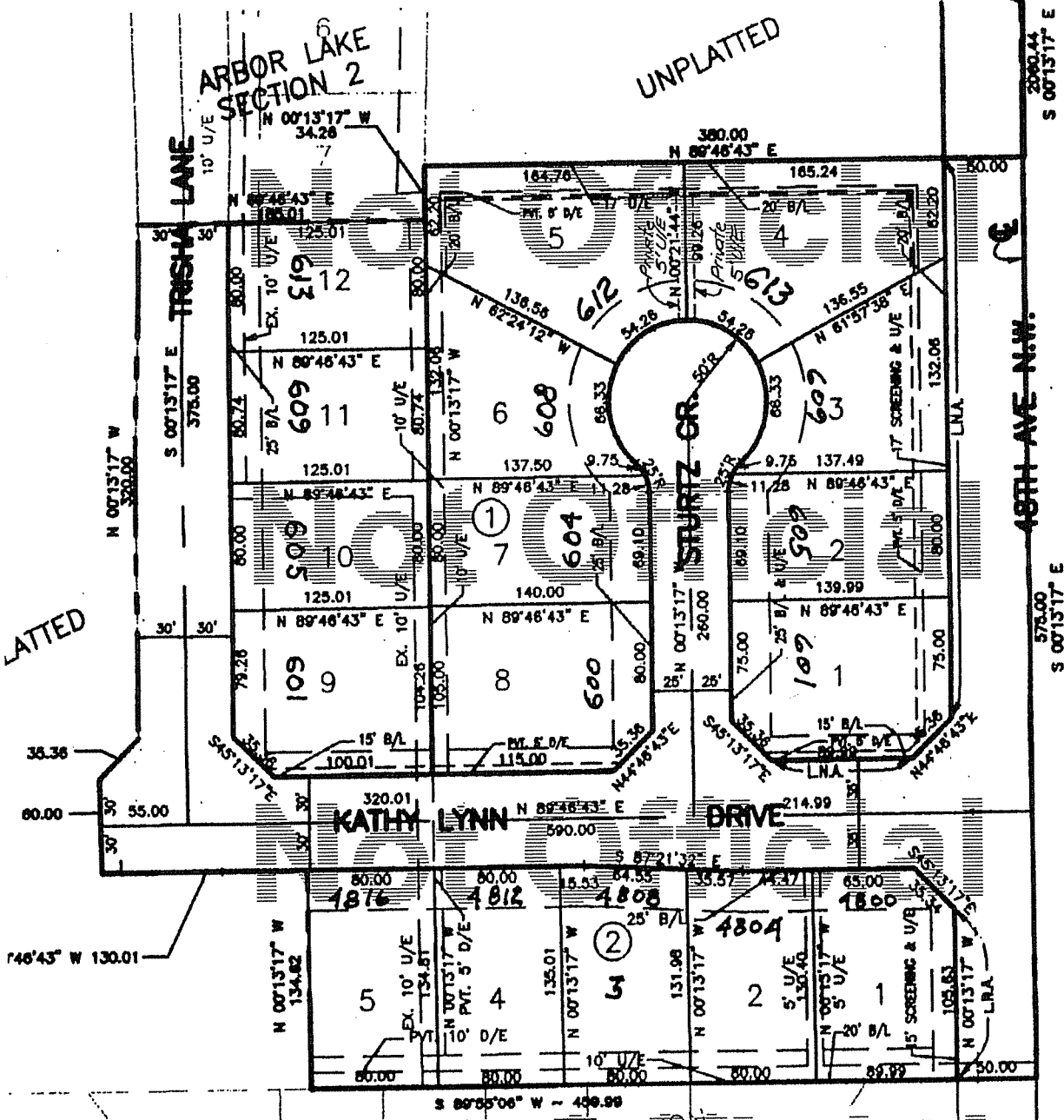
A PART OF THE N.E. 1/4, SECTION 28, T9N, R3W, I.M.  
NORMAN, CLEVELAND COUNTY, OKLAHOMA

FROM: OAKS OF NORMAN LP  
TO: PUBLIC



P.O.C.  
N.E. CORNER N.E. 1/4  
SECTION 28, T9N, R3W, I.M.

~~Not Official~~  
WEST ROBINSON STREET



S 00°13'17" E 200.44  
S 00°13'17" E  
S 00°13'17" E  
S 00°13'17" E  
S 00°13'17" E



SCALE: 1"=11'

~~Not Official~~  
BRIDGE